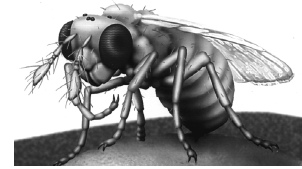


“MacTrix” Trichogramma Wasps



- **Easy to apply**
- **Cost effective**
- **Good for the environment**

Trichogrammatoidea cryptophlebiae has proved to be a very effective parasitoid of mac nutborer with parasitism rates over 90% commonly observed. The need to spray is therefore greatly reduced. The wasps work right into the tops of trees where good spray contact is difficult and continue to work during showery weather when spraying is problematic. There are also indications that high wasp activity reduces the numbers of overwintering MNB pupae. Trichogramma can be used in an IPM program in combination with products like tefubenzide.

Method of release

The Trichogramma are dispatched as parasitised nutborer eggs on sheets of finely corrugated cardboard which are broken up into 24 individual cards. Staple the cards to a leaf around head height in areas where nutborer have been observed; in areas where you expect moths to move into the orchard (e.g. from a rainforest gully) and areas where you've had a problem in the past.

Timing of release and release rates

Start releases from early November in Bundaberg, early December for SE Qld, mid December for Northern NSW and late December for Nambucca Heads – depending on number of weeks in program. Start time is likely to be before many eggs are found in the standard monitoring sample but it is important to parasitise some of the early laid eggs for early establishment of the wasps.

As a general rule, release 1,000 per hectare per week for at least six weeks. Order enough for the total area you want the wasps to be active in. In the first 2 or 3 weeks, place all the strips in known hot spots or along pressure boundaries. When eggs are found release through the block. If releases start late, then higher rates per hectare can be made over 2 or 3 weeks. Discuss your release rate and strategy with your crop consultant or call us.

Chemicals and Trichogramma

Prodigy® is not toxic to Trichogramma but they are killed by many other insecticides. It is desirable to minimise hazardous sprays after the Trichogramma have been introduced. If it is deemed necessary to spray a hazardous product, select one with a short residual toxicity. Once MacTrix are established in the crop the use of “hazardous” sprays is not as disruptive. Go to the web site for more info.

Prices

Sold by the 1,000 parasitised eggs (2 or 3 wasps emerge from each egg) \$26.50 to \$32 per 1,000 (depending on quantity) plus GST and postage. e.g. \$159 to \$192 per hectare. Call for advice on release rates.

Orders

Orders can be placed with your crop consultant. Otherwise contact us at:

BioResources Pty Ltd PO Box 578 Samford Qld 4520
Phone (07) 3289 4919 Fax (07) 3289 4918 Email: richard@bioresources.com.au

Home page: www.bioresources.com.au

Fruit spotting bug project: www.bioresources.com.au/FSBbiocontrol